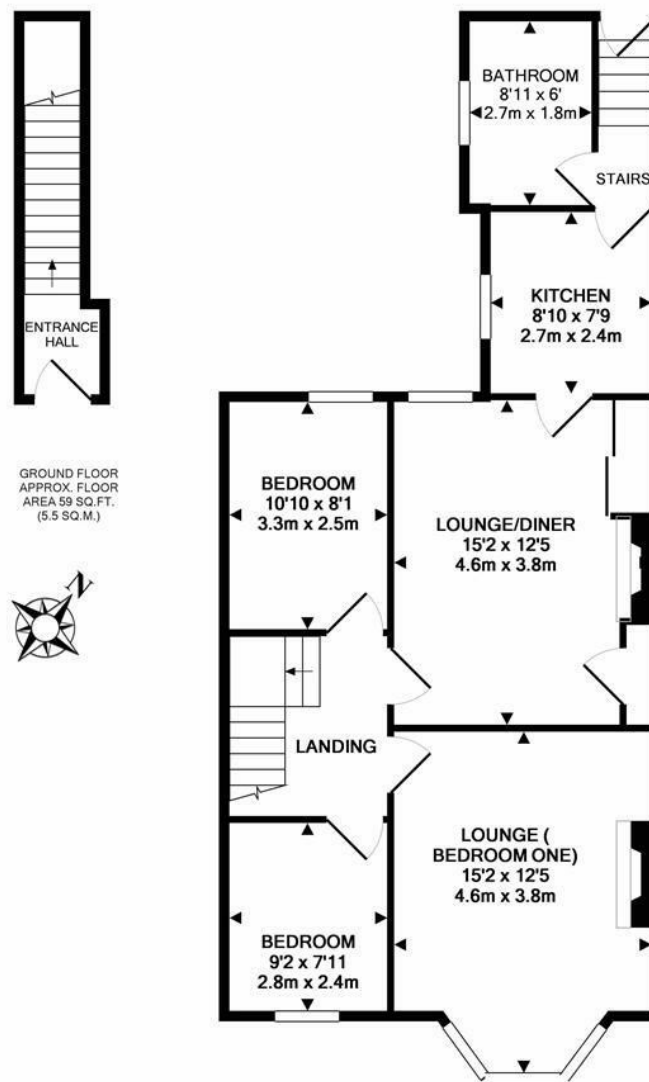


WELL PRESENTED THREE BEDROOM UPPER TYNESIDE FLAT. This great three bedroom upper 'Tyneside' flat is ideally located on Delaval Terrace, Gosforth. Delaval Terrace, tucked just off Salters Road and Ashburton Road, is perfectly situated close to the local amenities of Ashburton Road and Kenton Park Shops. It also has excellent transport links on Kenton Road and Salters Road providing easy access to the City Centre. Gosforth High Street, with its shops, cafes and restaurants is also only a short walk away.

Boasting close to 850 Sq ft, the accommodation briefly comprises: entrance hall with staircase to first floor landing; lounge/diner with storage to the alcoves; re-fitted kitchen with a range of fitted units and work surfaces; hallway with stairs to the rear yard; re-fitted shower room with three piece suite; three bedrooms, bedroom one with walk-in bay and feature living flame gas stove. Externally the property benefits from a communal rear yard with access to the rear service lane. Fully double-glazed and with gas 'Combi' central heating, early viewings are highly recommended!

Well Presented Upper 'Tyneside' Flat | 828 Sq ft (77.0 m2) | Three Bedrooms | Re-Fitted Kitchen | Re-Fitted Shower Room | Great Location | GCH & DG | Leasehold - Tyneside Lease | Council Tax Band A | EPC Rating: D

Offers Over £180,000



Whilst every attempt has been made to ensure the accuracy of the floor plan contained here, measurements of doors, windows, rooms and any other items are approximate and no responsibility is taken for any error, omission, or mis-statement. This plan is for illustrative purposes only and should be used as such by any prospective purchaser. The services, systems and appliances shown have not been tested and no guarantee as to their operability or efficiency can be given
Made with Metropix ©2018



IMPORTANT NOTE: These particulars and the descriptions and measurements herein do not constitute representation and whilst every effort has been made to ensure accuracy, this cannot be guaranteed.

